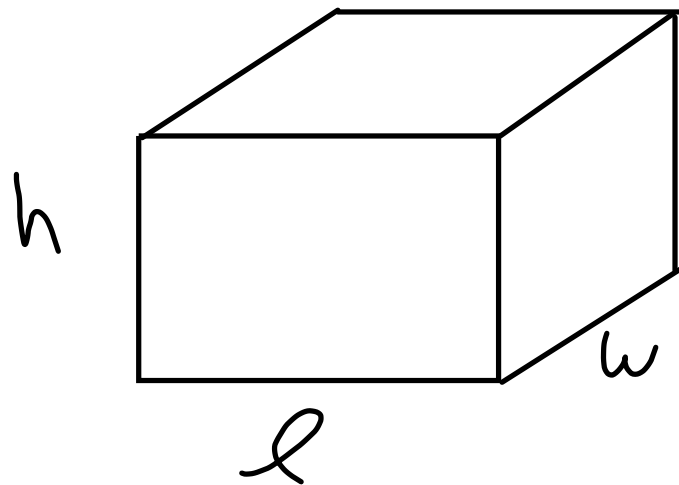


FEB 8/08

VOLUME



$$V = l \times w \times h$$

$$l = 10 \text{ cm}$$

$$w = 5 \text{ cm}$$

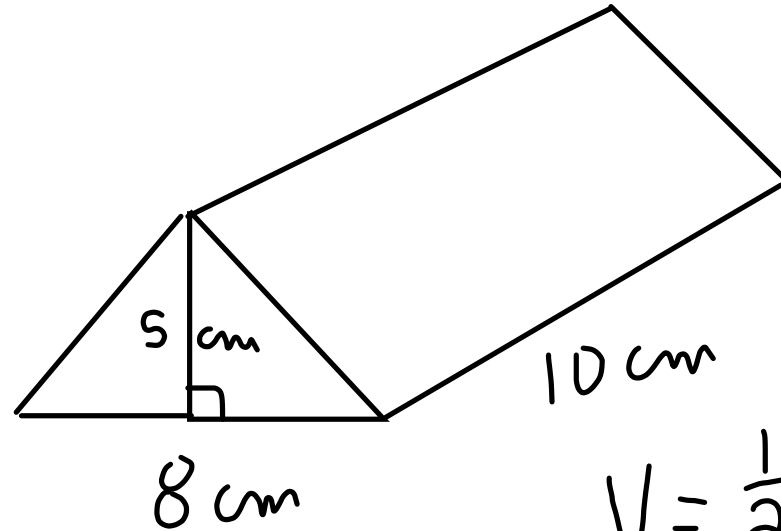
$$h = 7 \text{ cm}$$

$$V = l \times w \times h$$

$$V = 10 \times 5 \times 7$$

$$V = 350 \text{ cm}^3$$

TRIANGULAR PRISM

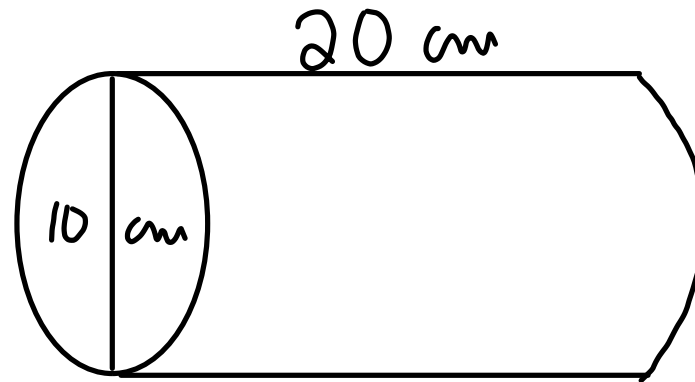


$$V = \frac{1}{2} b h l$$

$$V = \frac{1}{2} \cdot 8 \cdot 5 \cdot 10$$

$$V = 200 \text{ cm}^3$$

VOLUME OF A CYLINDER



$$V = \pi r^2 h$$

$$V = \pi \cdot 5^2 \cdot 20$$

$$V = \pi \cdot 500$$

$$V = 1570.8 \text{ cm}^3$$