

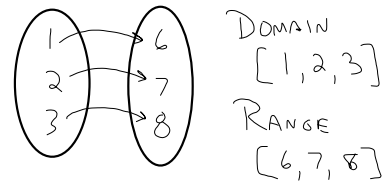
DEC 14/07

## DOMAIN & RANGE

RELATION - A SET OF ANY ORDERED  
PAIRS OF NUMBERS  $(x, y)$

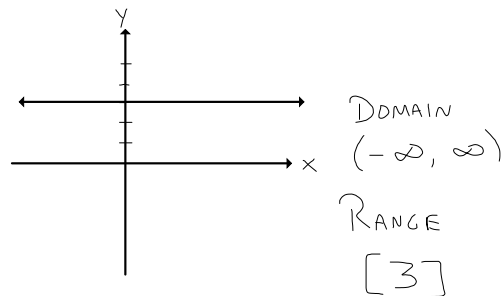
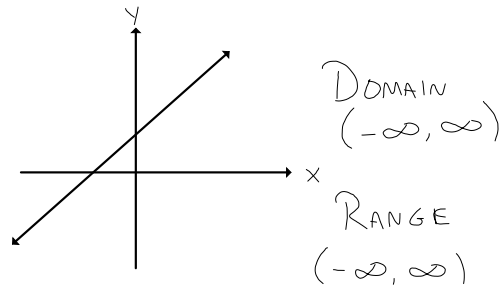
- THE DOMAIN IS THE SET OF ALL  
THE FIRST NUMBERS IN THE PAIRS  $(x)$
- THE RANGE IS THE SET OF ALL  
THE SECOND NUMBERS IN THE PAIRS  $(y)$

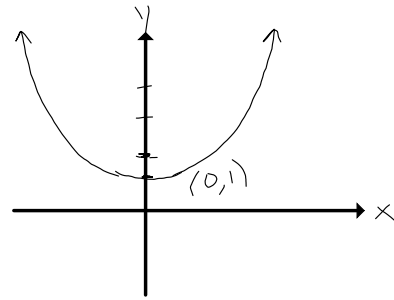
EX #1 MAPPING DIAGRAM



ROSTER NOTATION

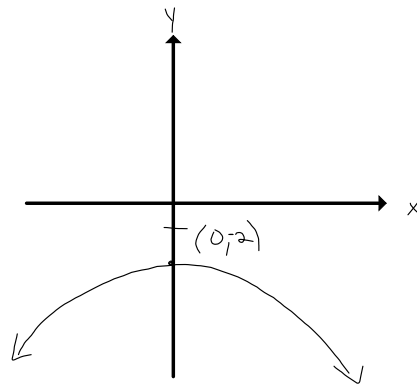
$\{(1, 6), (2, 7), (3, 8)\}$





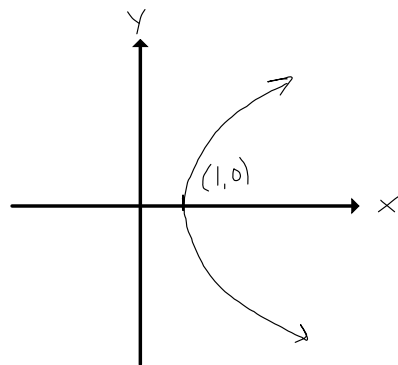
DOMAIN  
 $(-\infty, \infty)$

RANGE  
 $[1, \infty)$



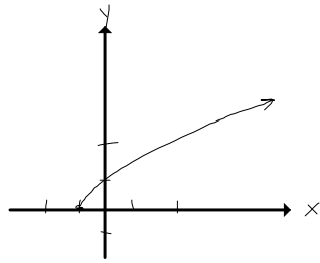
DOMAIN  
 $(-\infty, \infty)$

RANGE  
 $(-\infty, -2]$



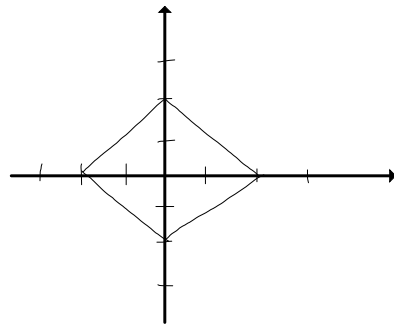
DOMAIN  
 $[1, \infty)$

RANGE  
 $(-\infty, \infty)$



DOMAIN  
 $[-1, \infty)$

RANGE  
 $[0, \infty)$

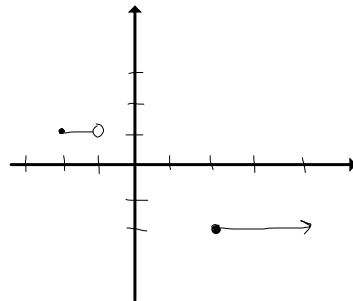


DOMAIN  
 $[-2, 2]$

RANGE  
 $[-2, 2]$

○ OPEN INTERVAL - DOES NOT INCLUDE THE VALUE (

● CLOSED INTERVAL - DOES INCLUDE THE VALUE [



DOMAIN  
 $[-2, -1) \cup [2, \infty)$

RANGE  
 $[-2] \cup [1]$