

MAR 24/08

GRAPHING A LINE

$$y = mx + b \leftarrow \text{Y-INTERCEPT}$$

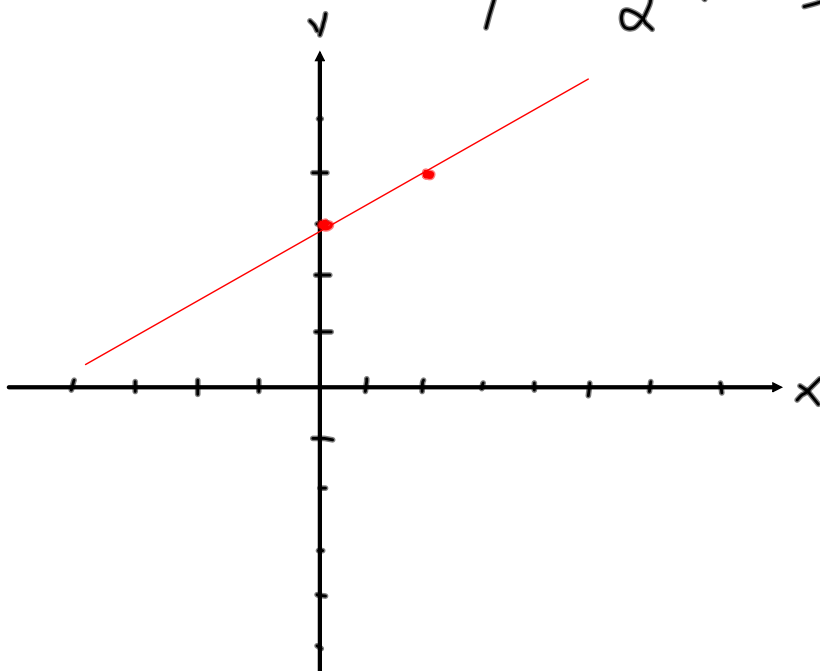
\uparrow SLOPE = $\frac{\text{RISE}}{\text{RUN}}$

CHANGE TO $y = mx + b$ (ISOLATE y)

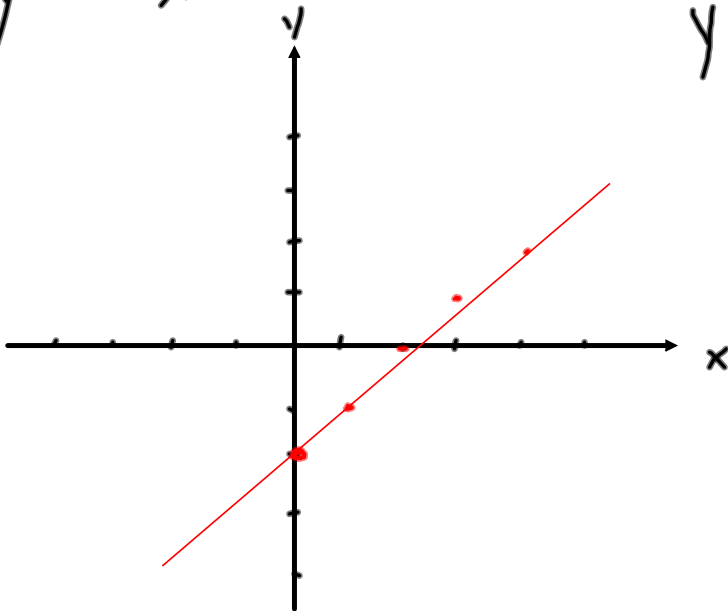
$$2x - 4y + 12 = 0$$

$$\frac{-4y}{-4} = \frac{-2x - 12}{-4}$$

$$y = \frac{1}{2}x + 3$$



$$y = x - 2$$



$$y = \frac{1}{1}x - 2$$

$$2x + y = 4$$

$$y = -2x + 4$$

$$y = -\frac{2}{1}x + 4$$

